



#startupindia



# SYNCBIO

RESEARCH PRIVATE LIMITED

Your Quality Research Partner



# SYNC BIO

RESEARCH PRIVATE LIMITED

Your Quality Research Partner

## ● ABOUT SYNC BIO RESEARCH PVT. LTD.

Modern 5000 sq.ft .standalone breeding of laboratory animals and research facility in Gujarat, India is setup to cater to the fast growing biotech pharma research and be a part of Government's " Start-up India" Strategy. We believe in Quality Management approach and serve our client with deep understanding of research requirement and business of Toxicology, Pre-clinical research.

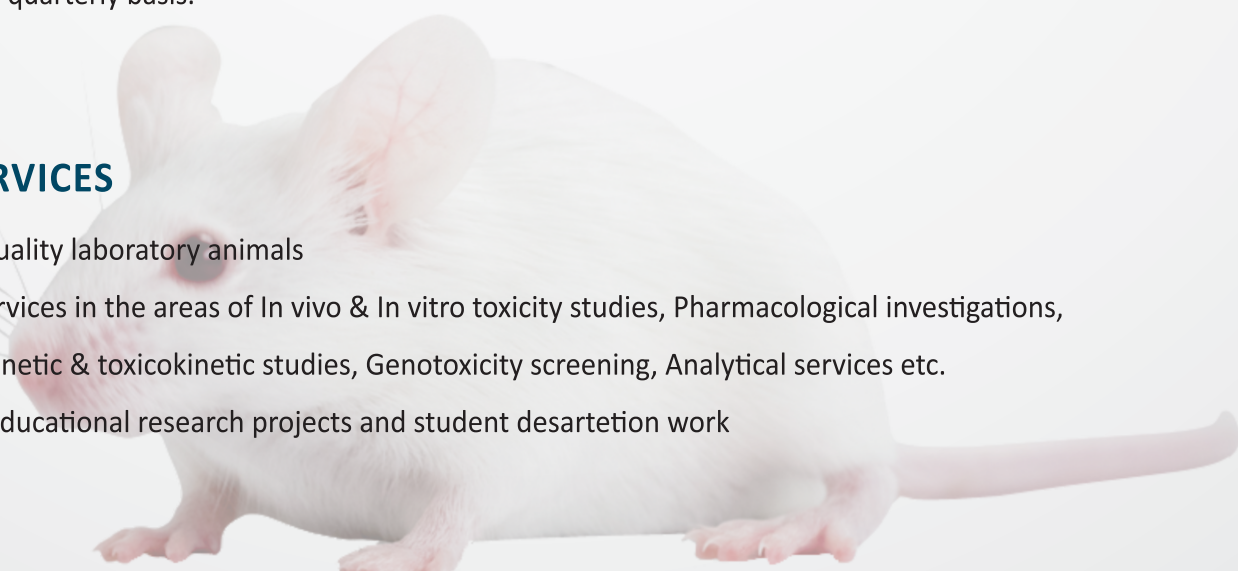
## ● FACILITY

Animal facility to house animals in an appropriate species-specific environment that meets all applicable policies, guidelines and regulations as outlined in the Guide for the Care and Use of Laboratory Animals, CPCSEA and animal welfare regulations. It provides optimum environment in breeding and experimental animals. The different species and strains of small laboratory animals are bred and maintained to supply the quality animals as per the requirement.

Dedicated Rooms for quarantine, breeding and Animals stock for each species and strain. Separate Feed room, bedding material room and washing room; Experiment room with lab instruments. All animals are provided with sanitized cages and bedding materials, proper feeds and RO treated water. Health monitoring of the animals for parasitological examinations, infectious virus and microbiological testing are done on quarterly basis.

## ● OUR SERVICES

- ✓ To supply quality laboratory animals
- ✓ To offers services in the areas of In vivo & In vitro toxicity studies, Pharmacological investigations, Pharmacokinetic & toxicokinetic studies, Genotoxicity screening, Analytical services etc.
- ✓ To service educational research projects and student desartetion work



## PHARMACEUTICALS / BIOPHARMACEUTICALS

### BIOASSAYS SERVICES (IP/BP)



- Menotrophin (HMG) – FSH/LH Activity
- Urofollitropin (FSH), Residual LH Activity
- Human Chorionic Gonadotrophin (hCG) activity
- Estrogenic Activity
- Urokinase
- Streptokinase
- Erythropoietin
- Heparin, Enoxaparin
- Tuberculin PPD
- Glomerular colony stimulating factor
- Immunogeneticity Tests (HIV/Hepatitis etc)

### TOXICITY / BATCH RELEASE – IP/BP/USP



- Abnormal Toxicity
- Pyrogen Testing
- Biological Reactivity test  
(Plastic granules & containers/Rubber stopper)
- PDE Report
- Irritation tests (Eye drops and cosmetics)
- Implantation tests (Plastic granules)





# PRECLINICAL AND TOXICOLOGICAL SERVICES

(HERBAL, FORMULATION, PESTICIDE, DYE, FOOD PRODUCTS)



## SCREENING STUDIES ON (IN-VITRO/IN-VIVO)

- Anti-Cancer activity
- Anti-Diabetic & Anti-Obesity activity
- Anti-HIV activity
- Anti-inflammatory & Anti-Arthritic activity
- DMPK Study (PK/PD, PK/TK)
- Other customized product screening services



## TOXICOLOGICAL STUDIES (IN-VITRO/IN-VIVO)

- Dose Range Finding
- Maximum Tolerated Dose
- Acute (All Routes)
- Skin Sensitization by GPMT
- Inhalation
- Sub-Acute
- Sub-Chronic
- Eye/Dermal Irritation
- Chronic
- Carcinogenicity

## REPRODUCTIVE & DEVELOPEMENTAL TOXICITY STUDIES



- Developmental Toxicity
- Combined Reproduction/Developmental Toxicity
- One/Two Generation Reproduction Toxicity
- Prenatal Developmental Toxicity
- Extended One-Generation Reproductive Toxicity



## GENOTOXICITY

- Chromosome Aberration Test
- Bone Marrow Aberration Test
- Micronucleus assay
- Ames Test (Mutation Test)
- Comet Assay

# BIO-COMPATIBILITY STUDIES OF MEDICAL DEVICES



- Biological Risk Assessment
- Cytotoxicity Study
- Skin Sensitization Study
- Irritation / Intracutaneous Reactivity
- Systemic Toxicity Study
- Genotoxicity
- Implantation Study
- Pyrogen Testing
- Hemocompatibility Test
- Degradation & Toxicokinetic Study
- Carcinogenicity test
- Reproductive/Developmental Toxicity

## RESEARCH & EDUCATIONAL SERVICES



### CUSTOMIZED ANIMAL MODELS

- Xenograft Models for Cancer Research
- Others (Ulcer/Respiratory/Diabetic/Obese)

### RESEARCH / TRAINING WORK

- Lab Facilities and Guidance
- Workshops
- Dissertation work
- Customized Research
- Testing Services for specific needs of Researchers
- Consultancy Services



# RODENT and NON RODENT LABORATORY ANIMALS

- Different strains of rodent and non-rodent as below



Species of Laboratory animals	Strain of Laboratory animals
Rats	Sprague -Dawley
	Wistar Albino
Mice	Swiss Albino
	Balb/C
G.Pigs	Dunkin Hartley Albino
Rabbits	Newzeland White Rabbit

## ● TRANSPORTATION

- ✓ Dedicated climate controlled vehicle
- ✓ Transit cages

## ● CONTACT US



📍 Office-1, Maruti Nandan Estate, Changodar GIDC,  
Tajpur Road,Ahmedabad - 382213, Gujarat , India

✉️ syncbioresearch@gmail.com

📞 +91 93137 43790 / 94276 26753

